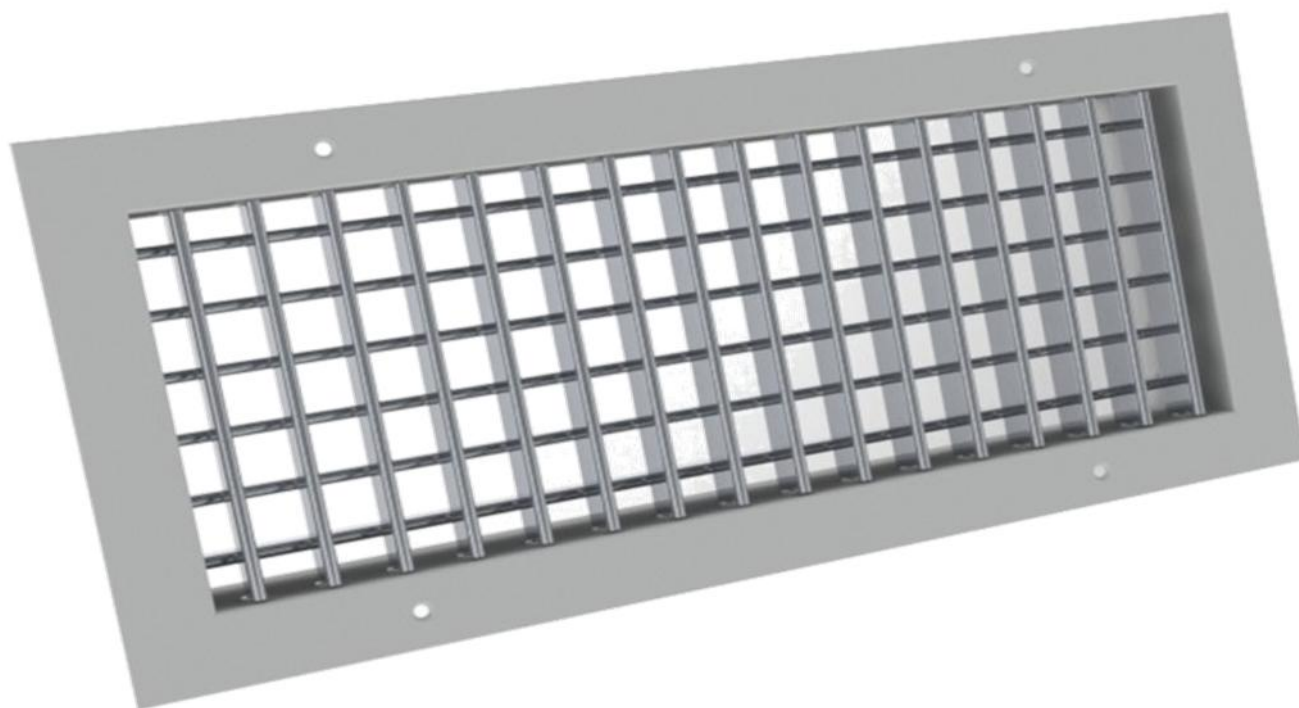




BMA

OUTLET GRILLE



No. 350154 Ed.O dated 02/12

Web Copy - uncontrolled distribution

Page 1 of 5

La Gardair S.p.A. si riserva il diritto di modificare i dati del presente foglio senza obbligo di preavviso
Gardair S.p.A. reserves the right to modify the data contained in this document without notice.



BMA/VO outlet grille



Version

BMA /VO: outlet grille with two sets of blades, front set parallel to side A.

BMA /OV (variant): as above, front set parallel to side B.

Accessories

SC: alternating blade shutter

PLE: plenum

PLE-I: insulated plenum

CT: galvanised sheet steel counter-frame for wall mounting

General features

BMA/VO series outlet grilles with two sets of blades are suitable for use as air outlet devices in cooling and heating systems; the blades, 20 mm apart, are all independent and can be individually positioned to obtain different air flow directions.

Grilles are mounted by means of screws on the front surround.

Model BMA/VO is constructed with the front blades parallel to side A and rear blades parallel to side B; conversely, on the BMA/OV model the front blades are parallel to side B, meaning that the rear blades are parallel to side A (see drawing).

Its structure guarantees high flows rates and low headlosses, with low noise levels.

Construction features

➤ **Material:** Extruded aluminium

➤ **Finish:** natural anodised

RAL scale (non-standard) colours are available on request

➤ **Mounting:** by means of screws on the front surround of the outlet grille

➤ **Installation height:** suitable for installation on walls

side B	side A
200	100-150-200
300	100-150-200-300
400	100-150-200-300-400
500	100-150-200-300-400-500
600	100-150-200-300-400-500
700	100-150-200-300-400
800	100-150-200-300-400-500
1000	100-150-200-300-400-500

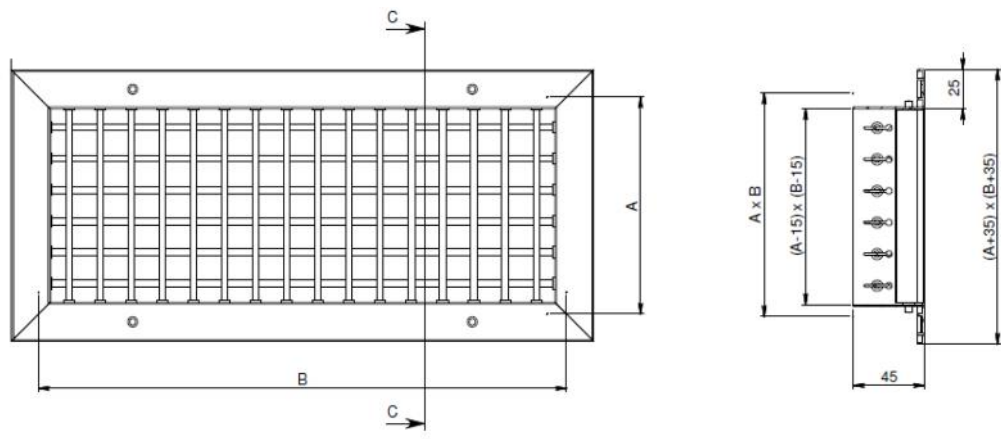
Adjustment

The air flow direction is adjusted by moving the blades by hand.

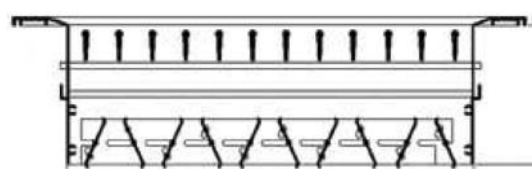
The air flow can be adjusted by installing the optional alternating blade shutter



Dimensions



SC: alternating blade shutter



General features

The alternating blade shutter is constructed entirely in aluminium with blades parallel to the short side.

side B	side A
200	100-150-200
300	100-150-200-300
400	100-150-200-300-400
500	100-150-200-300-400-500
600	100-150-200-300-400-500
700	100-150-200-300-400
800	100-150-200-300-400-500
1000	100-150-200-300-400-500

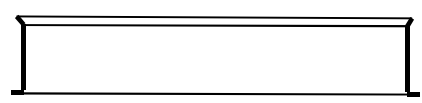
Construction features

It is made entirely from aluminium and is fixed to the BMA series outlet grille by means of clips

Adjustment

To operate the mechanism, simply use a screwdriver to turn the slot-head regulator screw, accessible from the front.

CT counter-frame



No. 350154 Ed.O dated 02/12



General features

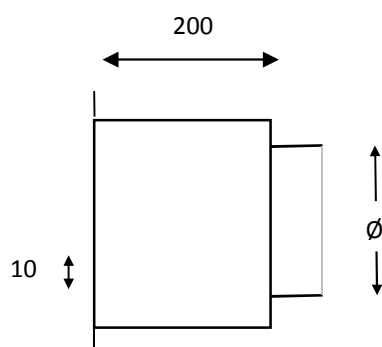
The CT counter-frame can be fixed to the wall or mounted on the air duct.

Construction features

Constructed entirely in galvanised steel, it is screwed to the duct or wall by means of the holes provided and is able to accommodate the BMA outlet grille, which can be fixed to the counter-frame using screws or clips.

The counter-frame is the same size as the outlet grilles to be used, so the holes (in the duct or wall) must be in the same positions as for the grille.

PLE/PLE-I plenum/insulated plenum



Ø	100	160	200	250	315	350	400
P	200	200	200	200	200	200	200
BxH	200x100	200x150	300x150	400x200	400x300	400x400	500x500
		200x200	300x200	500x150	600x200	500x300	600x500
		300x100	300x300	500x200	700x200	500x400	800x400
		400x100	400x150	600x150	800x150	600x300	800x500
			500x100	700x100	800x200	600x400	1000x300
			600x100	700x150	1000x150	700x300	1000x400
				800x100		700x400	1000x500
				1000x100		800x300	
						1000x200	

The PLE/PLE-I plenum is produced for installation on BMA/VO-OV outlet grilles and can be combined with the shutter.

Construction features

Constructed in galvanised steel, it can be coated with insulating material in the PLE-I version.



Selection chart

