



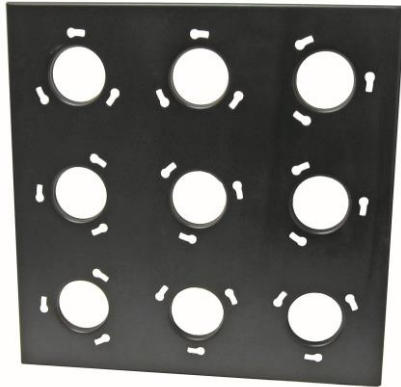
PCC

Carbon plates and cartridges





PCC activated carbon plates and cartridges



Versions

PCC5 (standard version)

5-hole plate, size 610x305x35, in black coated steel

PCC9 (standard version)

9-hole plate, size 610x610x35, in black coated steel

CC/SC 160

Empty cartridges, diameter 165 height 400 mm

CC/CC 160

Mod. CCS cartridges with carbon, diameter 165 height 400 mm

CC/SC 140

Empty cartridges, diameter 140 height 400mm. **Cannot be installed in PCC plates**

CC/CC 140

Mod. CCS cartridges with carbon, diameter 140 height 400 mm. **Cannot be installed in PCC plates**

General features

CC/CC 160 circular-section carbon cartridges are the ideal solution for removing unpleasant odours from the air. Due to their low headloss, high air flow, compact size and easy maintenance, they are particularly suitable for air treatment in air-conditioning and ventilation systems.

Cartridges are fixed to the plate by a bayonet system, rigidly mounted on the ring on the top of the cartridge. Plates and cartridges are both supplied coated black.

The CC/SC 160 version comes without activated carbon, which is easily added by the customer.

CC/CC and CC/SC cartridges are easily filled by removing the inner cover, by undoing the three self-tapping screws.



Application

Ideal for the coating sector, in air treatment plants, for removing odours from the fumes from kitchen extractor hoods and for purifying welding fumes.

Cleaning

Once the carbon's adsorption capacity is exhausted, the cartridges must be replaced. Users can replace just the carbon, reusing the cartridge's structure.

Cartridge 140

The cartridge mod. CC/CC 140 with outside diameter 140 – h 400 mm is available on request. The air flow is 200 m³/h with a pressure drop 250Pa, and carbon capacity is 2.5/2.7 (*) kg.

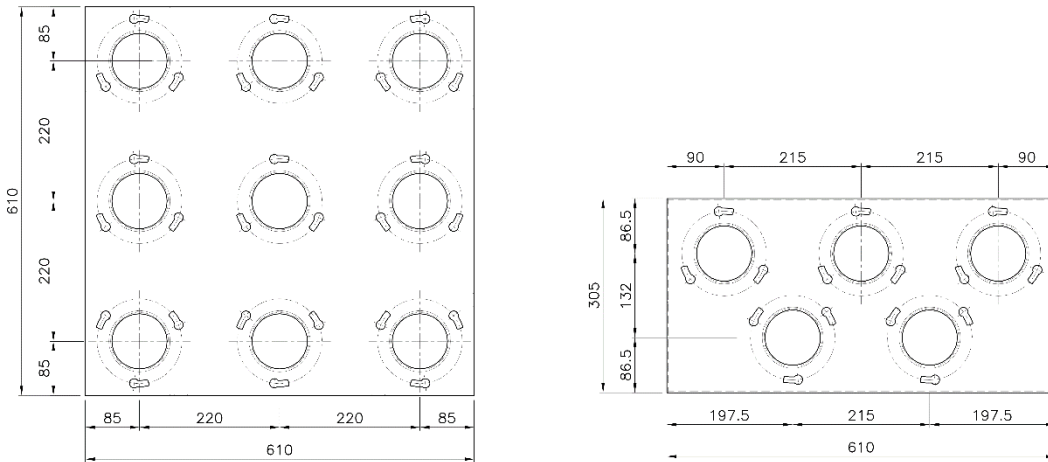
This cartridge cannot be installed on PCC5 and PCC9 plates.

Limits of use

Maximum operating temperature:	40 ° C
RH Maximum exercise:	70%

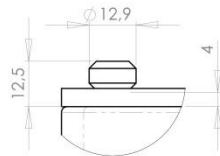
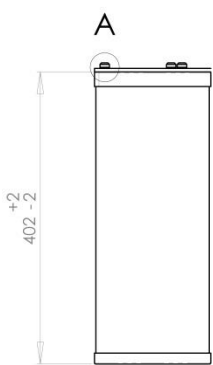


Plate dimension diagram for cartridge 160

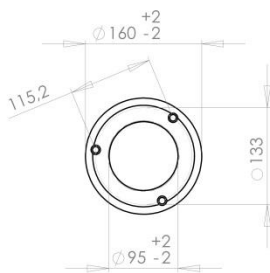


Web Copy - uncontrolled distribution

160 cartridge dimension diagram



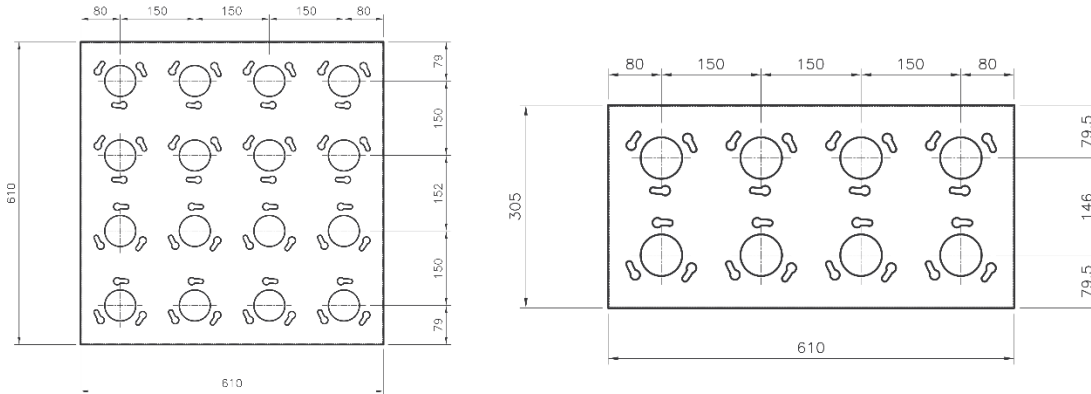
DETTAGLIO A SCALA 1 : 1



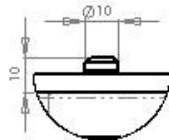
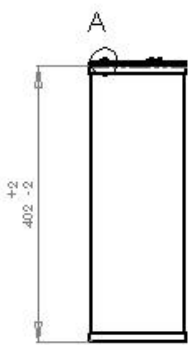
Guarnizione ad anello 10x5 a cellule chiuse



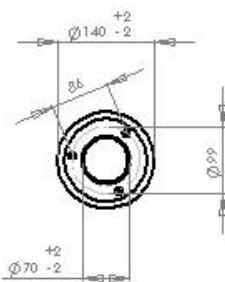
Plate dimension diagram for cartridge 140



140 cartridge dimension diagram



DETTAGLIO A
SCALA 1 : 1



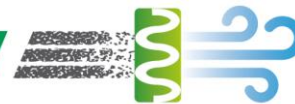
Guarnizione
ad anello
10x5
a cellule chiuse



Headloss diagram

Type	Plate front dimensions	Air flow m ³ /h	Headloss Pa	Cartridge type	Number of cartridges installed	Weight of carbon kg
PCC5	610x305	1500	200	cc/cc 160	5	15 (*)
		1250	130			
		1000	1000			
PCC9	610x610	3000	200	cc/cc 160	9	27 (*)
		2500	150			
		2000	100			

Web Copy - uncontrolled distribution



() Nominal weight referenced to cartridge loaded with our CCS charcoal. Tolerance +0; -10%*